

Sigma Arm Mixer

Double Arm Sigma Agitator

A Clean View of Mixing Performance

Peerless Double Sigma Arm Mixers are ideal for soft wire-cut cookie dough, cake, donuts, muffins, pretzels, granola, energy bars, scones, creams/fillings, Panettone and other seasonal baking items and more efficiently.

Sanitation

- High-Quality Bowl Construction made for a Long Production Life and Extra Clean Mixing Conditions
- Patented Z-Jacket Bowl Design available keeps your Dough at your Specified Temperatures
- End-To-End Canopy protects the Integrity of your Dough

Durability

- Stainless Steel Exterior over Heavy-Duty “Unibody” Frame
- Stainless Steel Mixing Bowl
- Variable-Frequency Drive (VFD) Adjusts to Mixing Environment

Productivity

- Peerless Mixer Solutions are designed to integrate with all Ingredient Handling Systems and Baking Processes
- PLC allows for Intuitive Operation and Control of the Mixing Process, and for Single-Person Control
- Safety Features support Productivity without compromising Worker Safety



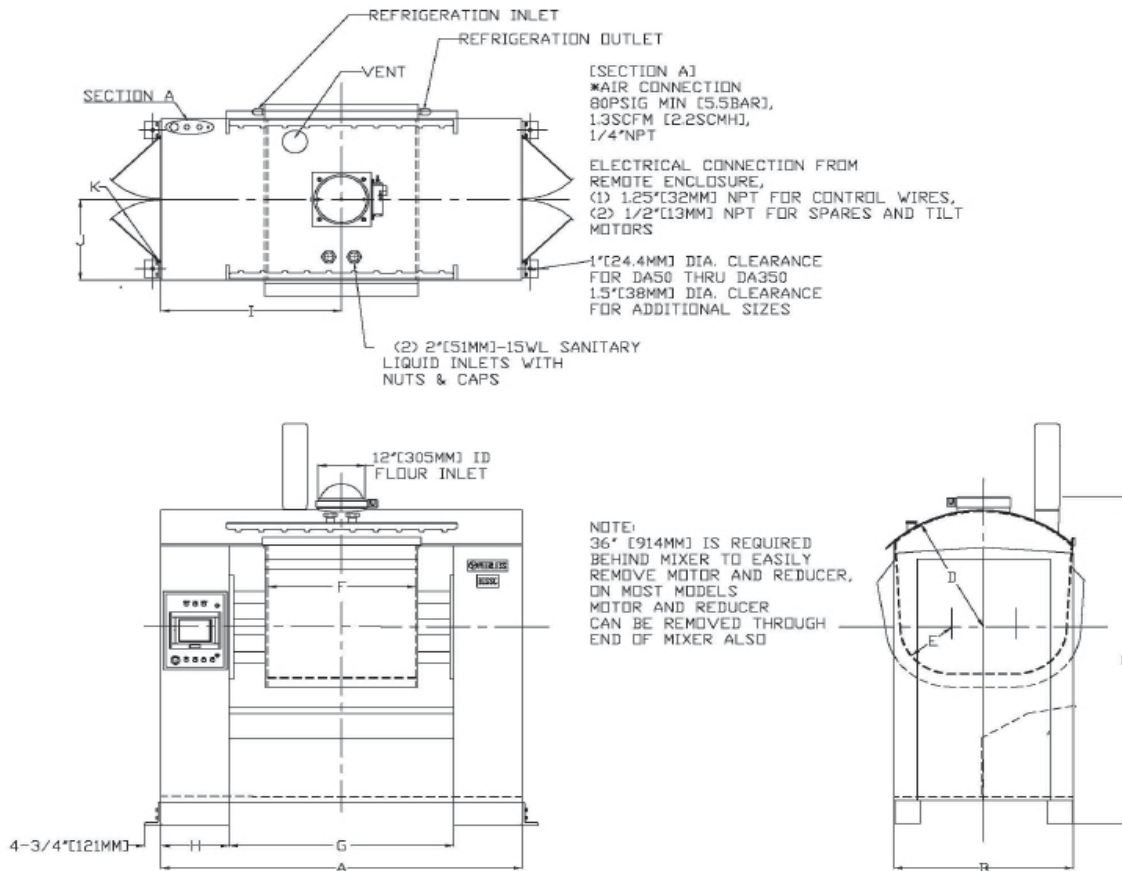
SPECIFICATIONS

Model	Mixing Capacity (Kilos)	Total Bowl Volume (Liters)	Working Volume (Liters.)	Drive Motor KW	Single Cylinder Tilt Motor KW	Net Weights (Kilos)	Approx. Shipping Weight (Kilos)
DA50	204	470	294	8	4	4,354	4,535
DA100	408	674	490	11	4	4,535	4,717
DA150	500	963	620	15	4	4,717	4,898
DA200	680	1,249	833	22	4	5,170	5,397
DA250	770	1,478	974	30	4	5,397	5,624
DA300	930	1,846	1,150	37	4	5,692	5,941
DA350	1,066	1,826	1,277	45	4	6,190	6,440
DA400	1,179	2,438	1,597	56	6	9,569	9,887
DA500	1,497	2,662	1,838	75	6	10,227	10,567
DA600	1,814	3,375	2,260	93	6	11,156	11,519
DA650	1,996	3,460	2,447	93	6	11,565	11,927





Dimensions



DIMENSIONS (Millimeters)

Model	A	B	C	D	E	F	G	H	I	J	K
DA50	2,134	1,067	2,096	699	216	711	1,168	483	1,067	533	483
DA100	2,134	1,067	2,184	762	305	711	1,168	483	1,067	533	483
DA150	2,311	1,067	2,184	762	305	889	1,346	483	1,156	533	483
DA200	2,667	1,067	2,375	838	305	1,194	1,702	483	1,334	533	483
DA250	2,769	1,067	2,426	889	305	1,194	1,803	483	1,384	533	483
DA300	2,921	1,168	2,553	914	330	1,397	1,956	483	1,461	584	533
DA350	2,921	1,168	2,553	914	356	1,397	1,956	483	1,461	584	533
DA400	3,023	1,321	2,807	1,016	394	1,397	1,956	533	1,511	660	610
DA500	3,302	1,422	2,997	1,016	406	1,524	2,083	610	1,575	711	660
DA600	3,531	1,473	3,048	1,067	432	1,702	2,261	635	1,588	737	686
DA650	3,531	1,524	3,099	1,118	457	1,702	2,261	635	1,664	762	711



Dimensions are for reference only. Due to the continuous effort of Peerless Engineering to improve performance, dimensional data and specifications are subject to change without notice.

