

Sigma Arm Mixer

Single Sigma Agitator

A Clean View of Mixing Performance

Peerless Single Sigma Arm Mixers are ideal for rotary molded and laminated or sheeted cookies, crackers, biscuits, corn tortillas, buttermilk biscuits, energy bars, pet foods and cream fillings. English Muffins. Whatever the product, a custom built Peerless will mix it better and more efficiently.



Sanitation

- Patented Z-Jacket Bowl Design available keeps your
- *Dough at your Specified Temperatures
- End-To-End Canopy protects the Integrity of your Dough

Durability

- Stainless Steel Mixing Bowl
- Agitator Shaft and Tilt Mechanisms built for 24/7 operations
- Variable-Frequency Drive (VFD) Adjusts to Mixing Environment

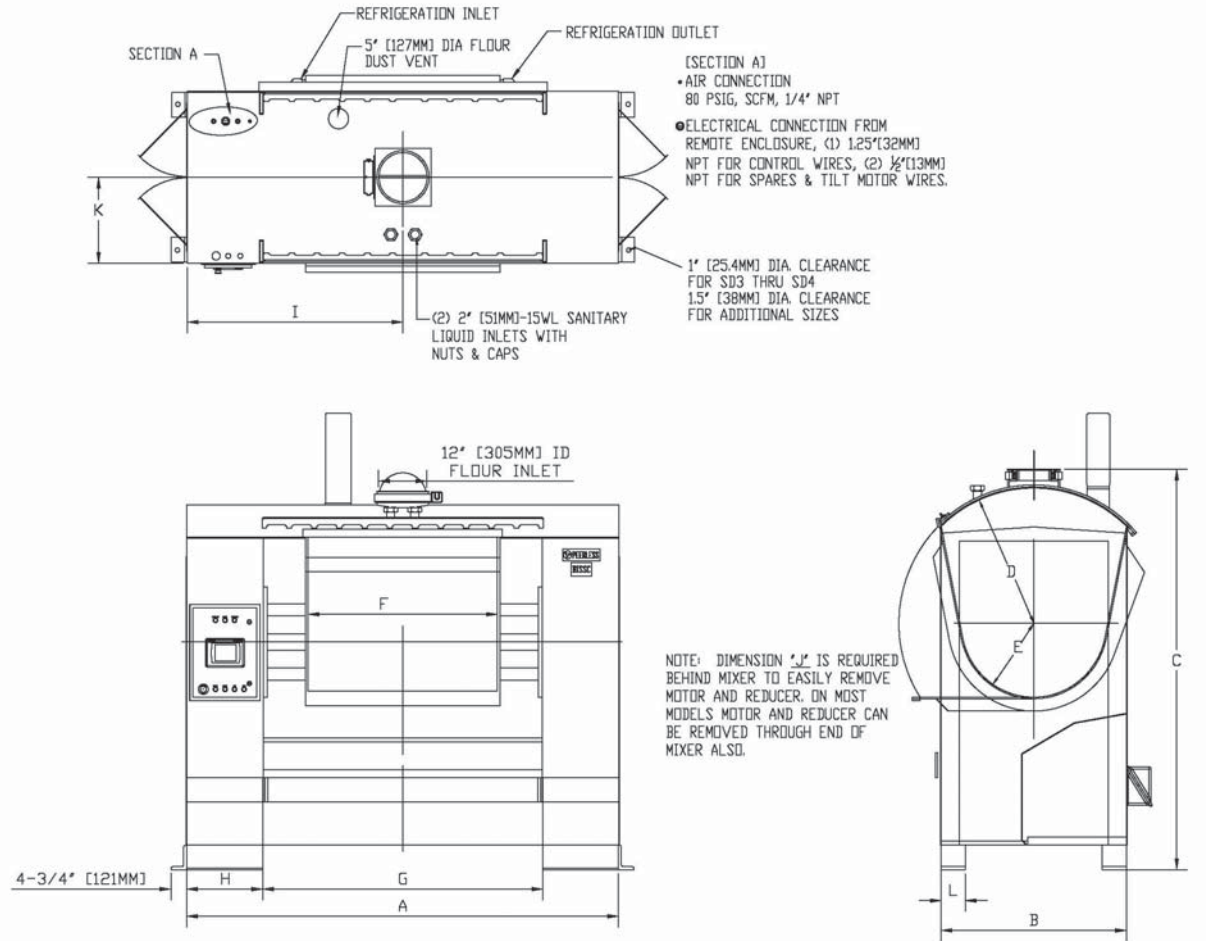
Productivity

- Peerless Mixer Solutions are designed to integrate with all Ingredient Handling Systems and Baking Processes
- PLC allows for Intuitive Operation and Control of the Mixing Process, and for Single-Person Control
- Safety Features support Productivity without compromising Worker Safety

Model	Mixing Capacity (Kilos)	Total Bowl Volume (Liters)	Working Capacity (Liters.)	Drive Motor KW	Total Load (KVA)	Tilt Motor KW	Net Weights (Kilos)	Approx. Shipping Weight (Kilos)
SD5	590	946	782	30	45	4	5,215	5,442
SD6	725	1,070	878	30	45	4	5,442	5,669
SD7	950	1,314	1,178	37	55	4	6,485	6,803
SD8	1,090	1,555	1,348	45	65	4	7,619	8,617
SD9	1,270	1,886	1,583	56	80	4	8,299	9,751
SD10	1,540	2,223	1,943	75	105	4	8,617	9,433
SD11	1,685	2,322	2,101	93	130	4	9,751	10,249
SD12	1,815	2,424	2,263	128	155	4	10,975	11,338



Dimensions



DIMENSIONS (Millimeters)

Model	A	B	C	D	E	F	G	H	I	J	K	L
SD5	2,591	1,168	2,464	838	457	1,016	1,626	483	1,295	711	584	229
SD6	2,718	1,168	2,464	838	457	1,143	1,753	483	1,359	711	584	229
SD7	2,845	1,270	2,692	838	508	1,270	1,880	483	1,422	711	635	229
SD8	2,997	1,270	2,692	889	508	1,422	1,270	483	1,499	813	635	229
SD9	2,997	1,270	2,692	965	559	1,422	2,032	483	1,499	813	635	229
SD10	3,277	1,372	2,946	965	559	1,702	2,311	483	1,638	813	686	229
SD11	3,378	1,372	2,946	965	584	1,702	2,311	533	1,689	813	686	305
SD12	3,378	1,422	2,946	991	610	1,702	2,311	533	1,689	813	711	305



Dimensions are for reference only. Due to the continuous effort of Peerless Engineering to improve performance, dimensional data and specifications are subject to change without notice.

